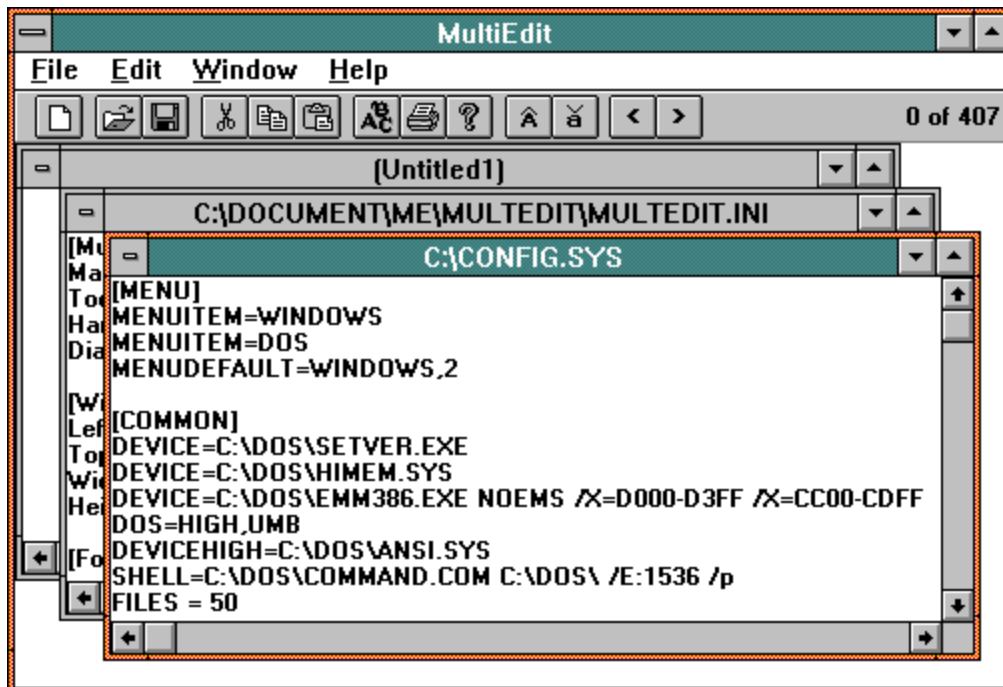




MultiEdit Help Contents



Click on the part of the screen you would like help on.

[Registration](#)

[MULTEDIT.INI File](#)



File Menu

New	Opens a new window.
Open	Brings up a dialog box to open a new text file.
Close	Closes the currently selected window.
Save	Saves the current text file.
Save As	Saves the current text file under a new name.
Print	Prints the current text file.
Recent File List	Lists the 9 most recent files used for easier retrieval.
Exit	Exits MultiEdit.



Edit Menu

- Undo** Undoes the previous change to the active text file.
- Cut** Cuts the selected text into the clipboard.
- Copy** Copies the selected text into the clipboard.
- Paste** Pastes the text on the clipboard into the selected area.
- Delete** Deletes the selected text.
- Find** Finds an occurrence text within the currently selected item.
- Find Next** Finds the next occurrence of text within the currently selected item.
- Replace** Replaces all occurrences of one string with another in the currently selected item.
- Options** Brings up the Options Screen.
- Font** Changes the font for all windows and printing. This information is saved in the CODEKEEP.INI file.
- Select All** Selects all text in the current text file.
- Time/Date** Inserts the current time and date into the active text file.
- Upper Case** Converts the selected text to all upper case letters.
- Lower Case** Converts the selected text to all lower case letters.
- Left** Shifts the selected text to the left by removing one leading space from each line.
- Right** Shifts the selected text to the right by adding one leading space to each line.



Window Menu

Cascade	Cascades the open windows.
Tile Horizontal	Tiles the open windows horizontally.
Tile Vertical	Tiles the open windows vertically.
Arrange Icons	Arranges the iconized windows.
Close All	Closes all open text windows prompting for save if needed.
Window List	Keeps a list of the current windows to select from.



Help Menu

- Contents** Brings up the help file.
- About** Brings up the about screen.
- Register** Brings up the Registration window. (not visible in registered version)



Text Window

This window displays the current text file for viewing and editing. Text in this window can be edited and then saved with the command from the File menu if it was not loaded read-only.

When the right mouse button is clicked on the text area, a menu of editing commands pops up based on the selection. See [Edit Menu](#).

A new window can be created by selecting New from the File menu.



Initialization File: MULTEDIT.INI

When you change any options on the options screen, they are saved to the MULTEDIT.INI in your MultiEdit directory.

The MULTEDIT.INI flag is an ASCII text file, which should not be edited since values read from this file are not validated. If an item is deleted from the file, MultiEdit will replace it with a default value.

The following information is saved to the MULTEDIT.INI file:

MultiEdit:

Maximized Child: Tells if the startup code window is maximized.

ToolBar: Tells MultiEdit whether to display the tool bar or not.

Dialog Filter: Tells MultiEdit what selections to put in the file dialog boxes. Do not change this unless you know what you are doing. If you mess it up, delete the line and MultiEdit will replace it with a default.

Font:

Details about the default font used for all MultiEdit windows and printing.

Window:

Position of the MultiEdit windows at startup. This is saved every time you exit.

Registration:

Encrypted information that tells the program if you are registered. Do not change these entries as it will render your program unregistered. Use the Registration screen to enter this data. If you want to re-enter your registration information, delete this section.

Old Files:

This is where MultiEdit keeps a list of recently used files. Every time a file is opened or saved, it is put at position 1.



Registration

MultiEdit for Windows is distributed as "shareware." It is not free software. You are being given a chance to use this program for a period of thirty (30) days before buying it. If after this time you continue to use MultiEdit, you are expected to register it. Registration gives you the right to continue to use this software as well as news and discounts on future upgrades. You are encouraged to distribute this software, providing it is distributed in its entirety and without charge (except for media and handling, if applicable). I reserve the right to change these restrictions in future versions.

If you find this product useful and continue to use MultiEdit after thirty days, you are required to register it by making a payment of \$10 (US) to me. Include an additional \$3 (US) if you would like the most recent version mailed to you. This fee will license one copy of MultiEdit for use on any one computer at any one time. To register MultiEdit, print out the form called REGISTER.WRI using Windows Write and send with your payment to:

Bradley S. Murray
20 Lorrie Lane
PO Box 365
Princeton Jct., NJ 08550

You may also contact me by E-Mail at bmurray@pluto.njcc.com. I would like to hear suggestions for updates as well as overall comments.



Options Screen

Allows you to change options for the program.

Max Child Window Tells the program to maximize the active text window at the start of the program.

Tool Bar Makes the tool bar visible. This tool bar gives you easier access to many of the menu commands.

Text Window

This window displays the current text file. Text in this window can be edited and then saved with the command from the File menu.

When the right mouse button is clicked on the text area, a menu of editing commands pops up based on the selection.

A new window can be created by selecting New from the File menu.

Shift Left/Right

Left Shifts the selected text to the left by removing one leading space from each line.

Right Shifts the selected text to the right by adding one leading space to each line.

Upper/Lower Case

Upper Case Converts the selected text to all upper case letters.

Lower Case Converts the selected text to all lower case letters.

New

Opens a new window.

Open

Brings up a dialog box to open a new text file.

Save

Saves the current text file.

Cut

Cuts the selected text into the clipboard.

Copy

Copies the selected text into the clipboard.

Paste

Pastes the text on the clipboard into the selected area.

Font

Changes the font for all windows and printing. This information is saved in the CODEKEEP.INI file.

Print

Prints the current text file.

Help

Brings up the help file.

File Location

Tells you where you are in the text file as [position in file] of [length of file]

